



# BEDIENUNGSANLEITUNG BAUREIHE 21

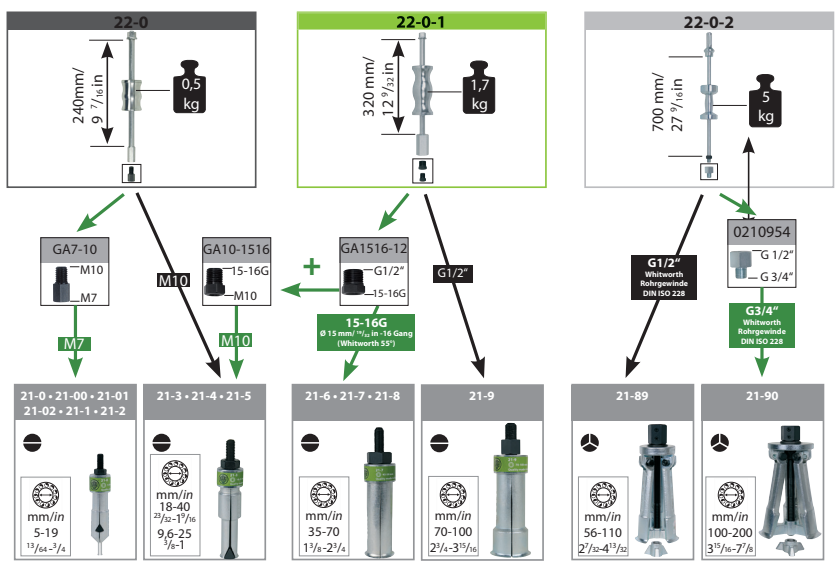


## Anwendungsbeispiel Innenausziehen mit Gleithammer

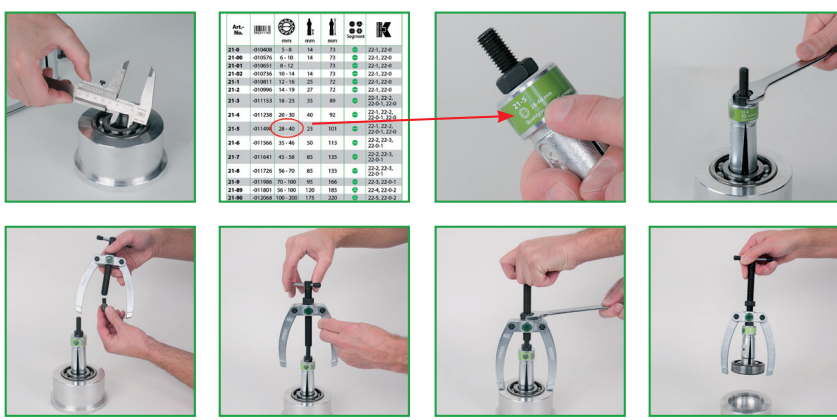


Art.	mm	mm	mm	K	
21-0	01000	3-8	14	73	21-0,22-0
21-00	01076	4-10	14	73	21-0,22-0
21-01	01051	5-11	14	73	21-0,22-0
21-02	01076	10-14	14	73	21-0,22-0
21-03	01081	12-16	14	73	21-0,22-0
21-04	01096	14-17	14	73	21-0,22-0
21-05	01111	16-20	14	73	21-0,22-0
21-06	01126	18-22	14	73	21-0,22-0
21-07	01141	20-24	14	73	21-0,22-0
21-08	01156	22-26	14	73	21-0,22-0
21-09	01171	24-28	14	73	21-0,22-0
21-10	01186	26-30	14	73	21-0,22-0
21-11	01201	28-32	14	73	21-0,22-0
21-12	01216	30-34	14	73	21-0,22-0
21-13	01231	32-36	14	73	21-0,22-0
21-14	01246	34-38	14	73	21-0,22-0
21-15	01261	36-40	14	73	21-0,22-0
21-16	01276	38-42	14	73	21-0,22-0
21-17	01291	40-44	14	73	21-0,22-0
21-18	01306	42-46	14	73	21-0,22-0
21-19	01321	44-48	14	73	21-0,22-0
21-20	01336	46-50	14	73	21-0,22-0
21-21	01351	48-52	14	73	21-0,22-0
21-22	01366	50-54	14	73	21-0,22-0
21-23	01381	52-56	14	73	21-0,22-0
21-24	01396	54-58	14	73	21-0,22-0
21-25	01411	56-60	14	73	21-0,22-0
21-26	01426	58-62	14	73	21-0,22-0
21-27	01441	60-64	14	73	21-0,22-0
21-28	01456	62-66	14	73	21-0,22-0
21-29	01471	64-68	14	73	21-0,22-0
21-30	01486	66-70	14	73	21-0,22-0
21-31	01501	68-72	14	73	21-0,22-0
21-32	01516	70-74	14	73	21-0,22-0
21-33	01531	72-76	14	73	21-0,22-0
21-34	01546	74-78	14	73	21-0,22-0
21-35	01561	76-80	14	73	21-0,22-0
21-36	01576	78-82	14	73	21-0,22-0
21-37	01591	80-84	14	73	21-0,22-0
21-38	01606	82-86	14	73	21-0,22-0
21-39	01621	84-88	14	73	21-0,22-0
21-40	01636	86-90	14	73	21-0,22-0
21-41	01651	88-92	14	73	21-0,22-0
21-42	01666	90-94	14	73	21-0,22-0
21-43	01681	92-96	14	73	21-0,22-0
21-44	01696	94-98	14	73	21-0,22-0
21-45	01711	96-100	14	73	21-0,22-0
21-46	01726	98-102	14	73	21-0,22-0
21-47	01741	100-104	14	73	21-0,22-0
21-48	01756	102-106	14	73	21-0,22-0
21-49	01771	104-108	14	73	21-0,22-0
21-50	01786	106-110	14	73	21-0,22-0

## Kombination von Gleithammer mit 2- und 3-schaligen Innenauszieher, Serie 21

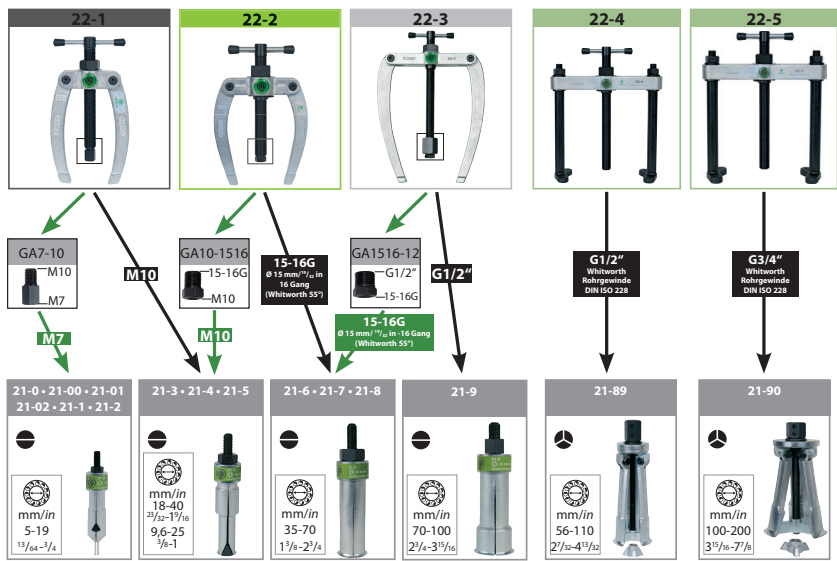


## Anwendungsbeispiel Innenausziehen mit Gegenstütze

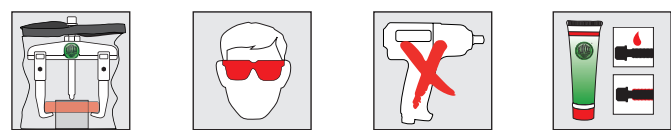


Art.	mm	mm	mm	K	
21-0	01000	3-8	14	73	21-0,22-0
21-00	01076	4-10	14	73	21-0,22-0
21-01	01051	5-11	14	73	21-0,22-0
21-02	01076	10-14	14	73	21-0,22-0
21-03	01081	12-16	14	73	21-0,22-0
21-04	01096	14-17	14	73	21-0,22-0
21-05	01111	16-20	14	73	21-0,22-0
21-06	01126	18-22	14	73	21-0,22-0
21-07	01141	20-24	14	73	21-0,22-0
21-08	01156	22-26	14	73	21-0,22-0
21-09	01171	24-28	14	73	21-0,22-0
21-10	01186	26-30	14	73	21-0,22-0
21-11	01201	28-32	14	73	21-0,22-0
21-12	01216	30-34	14	73	21-0,22-0
21-13	01231	32-36	14	73	21-0,22-0
21-14	01246	34-38	14	73	21-0,22-0
21-15	01261	36-40	14	73	21-0,22-0
21-16	01276	38-42	14	73	21-0,22-0
21-17	01291	40-44	14	73	21-0,22-0
21-18	01306	42-46	14	73	21-0,22-0
21-19	01321	44-48	14	73	21-0,22-0
21-20	01336	46-50	14	73	21-0,22-0
21-21	01351	48-52	14	73	21-0,22-0
21-22	01366	50-54	14	73	21-0,22-0
21-23	01381	52-56	14	73	21-0,22-0
21-24	01396	54-58	14	73	21-0,22-0
21-25	01411	56-60	14	73	21-0,22-0
21-26	01426	58-62	14	73	21-0,22-0
21-27	01441	60-64	14	73	21-0,22-0
21-28	01456	62-66	14	73	21-0,22-0
21-29	01471	64-68	14	73	21-0,22-0
21-30	01486	66-70	14	73	21-0,22-0
21-31	01501	68-72	14	73	21-0,22-0
21-32	01516	70-74	14	73	21-0,22-0
21-33	01531	72-76	14	73	21-0,22-0
21-34	01546	74-78	14	73	21-0,22-0
21-35	01561	76-80	14	73	21-0,22-0
21-36	01576	78-82	14	73	21-0,22-0
21-37	01591	80-84	14	73	21-0,22-0
21-38	01606	82-86	14	73	21-0,22-0
21-39	01621	84-88	14	73	21-0,22-0
21-40	01636	86-90	14	73	21-0,22-0
21-41	01651	88-92	14	73	21-0,22-0
21-42	01666	90-94	14	73	21-0,22-0
21-43	01681	92-96	14	73	21-0,22-0
21-44	01696	94-98	14	73	21-0,22-0
21-45	01711	96-100	14	73	21-0,22-0
21-46	01726	98-102	14	73	21-0,22-0
21-47	01741	100-104	14	73	21-0,22-0
21-48	01756	102-106	14	73	21-0,22-0
21-49	01771	104-108	14	73	21-0,22-0
21-50	01786	106-110	14	73	21-0,22-0

## Kombination von Gegenstütze mit 2- und 3-schaligen Innenauszieher, Serie 21



## Sicherheits und Gebrauchshinweise



**KUKKO-Werkzeugfabrik Kleinbongartz & Kaiser oHG**  
 Heinrich-Hertz-Str. 5 • 40721 Hilden • GERMANY  
 Phone: +49 2103 9754-300 • Fax: +49 2103 9754-310  
**Für Bestellungen: order@KUKKO.com • www.KUKKO.com**



BA-21

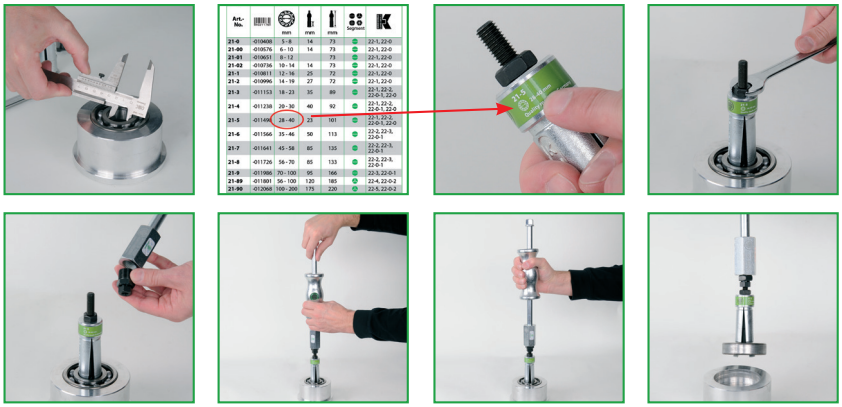


# INSTRUCTION MANUAL

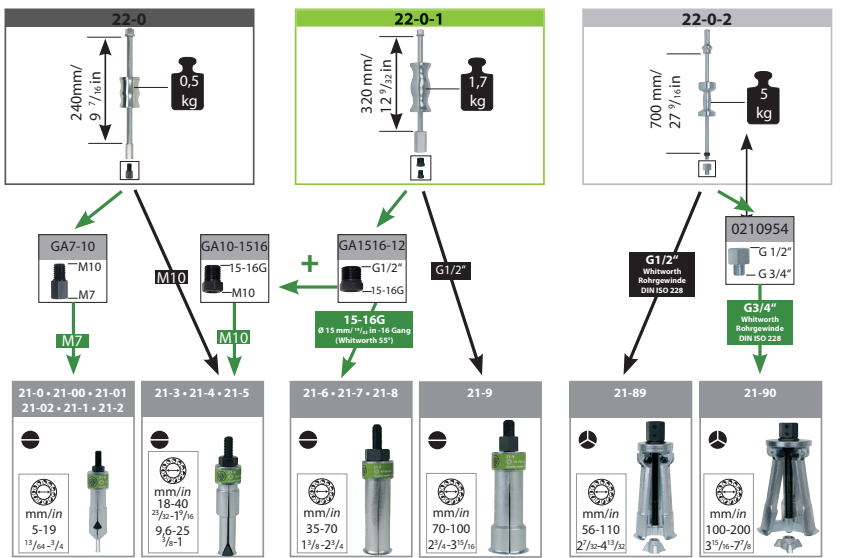
## SERIES 21



### Example of application with slide hammer



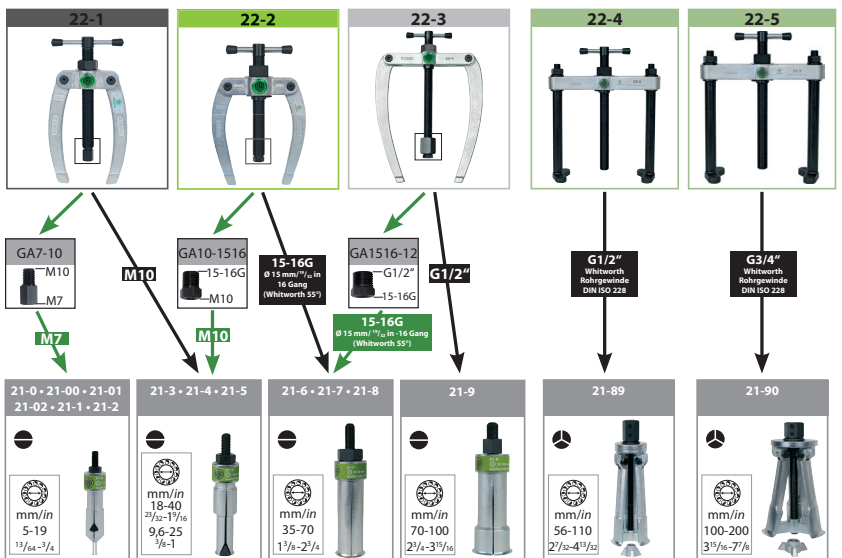
### Combination of slide hammer with internal extractors, series 21



### Example of application with counter stay



### Combination of counter stay with internal extractors, series 21



### Safety instructions



**KUKKO-Werkzeugfabrik Kleinbongartz & Kaiser oHG**  
 Heinrich-Hertz-Str. 5 • 40721 Hilden • GERMANY  
 Phone: +49 2103 9754-300 • Fax: +49 2103 9754-310  
 For orders: [order@KUKKO.com](mailto:order@KUKKO.com) • [www.KUKKO.com](http://www.KUKKO.com)



BA-21