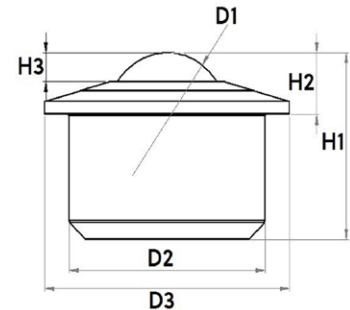
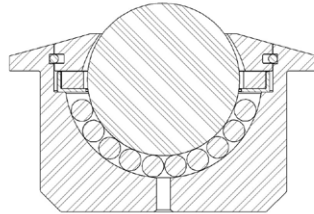


Solid ball caster with collar



Designation	Material of bearing ball	Dimensioning						Sealing felt	Load bearing capacity (kg)
		Ø D1 (mm)	Ø D2 (mm)	Ø D3 (mm)	H1 (mm)	H2 (mm)	H3 (mm)		
Tolerances	-	-	+/- 0.1	+/- 0.1	+/- 0.1	+/- 0.1	-	-	-
Solid ball caster / ball transfer units and collar, galvanised									
015.100*	Tool steel	15.875	24.0	31.0	21.0	9.5	3.0	yes / no	100
015.102		15.875	24.0	31.0	20.5	9.5	4.5	yes / no	100
022.100		22.225	36.0	45.0	30.5	10.0	4.5	yes	240
030.100		30.000	45.0	55.0	37.0	14.0	5.5	yes	350
045.100		44.500	62.0	75.0	53.5	19.0	9.0	yes	800
060.100		57.100	100.0	117.0	77.5	29.5	16.0	yes	1.500
015.110*	Plastic	15.875	24.0	31.0	21.0	9.5	3.0	yes / no	25
015.112		15.875	24.0	31.0	20.5	9.5	4.5	yes / no	25
022.110		22.225	36.0	45.0	30.5	10.0	4.5	yes	50
030.110		30.000	45.0	55.0	37.0	14.0	5.5	yes	100
015.120*	Stainless steel	15.875	24.0	31.0	21.0	9.5	3.0	yes / no	100
015.122		15.875	24.0	31.0	20.5	9.5	4.5	yes / no	100
022.120		22.225	36.0	45.0	30.5	10.0	4.5	yes	240
030.120		30.000	45.0	55.0	37.0	14.0	5.5	yes	350
045.120		44.500	62.0	75.0	53.5	19.0	9.0	yes	800
Solid stainless steel ball caster / ball transfer units with collar									
015.130*	Stainless steel	15.875	24.0	31.0	21.0	9.5	3.0	yes / no	100
015.132		15.875	24.0	31.0	20.5	9.5	4.5	yes / no	100
022.130		22.225	36.0	45.0	30.5	10.0	4.5	yes	240
030.130		30.000	45.0	55.0	37.0	14.0	5.5	yes	350

* lid out of sheet steel

Solid ball caster with collar



Design and construction

This Schulz ball caster / ball transfer unit consists of a casing and top cover as solid turned parts, a bearing ball and several support balls.

Dimensions

The spacing is calculated by dividing the shortest edge length of the object to be transported by 3.5.

Materials

Casing:	tempered, galvanised steel, tempered stainless steel
Lid:	galvanised steel, stainless steel
Ball cup:	tempered steel, tempered stainless steel
Support balls:	tool steel (tempered), stainless steel (tempered)
Bearing ball:	tool steel (tempered), stainless steel (tempered), plastic

Operational conditions

Temperature range from -30°C to +100°C (up to +30°C with plastic bearing ball)

Conveyance velocity of up to 1.5 m/s.

Dynamic load rating up to max. 1.500 kg.