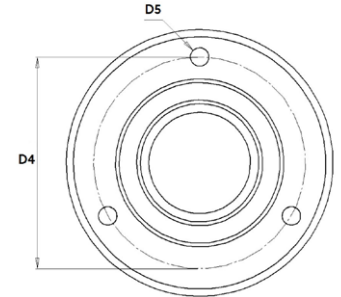
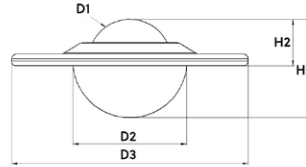
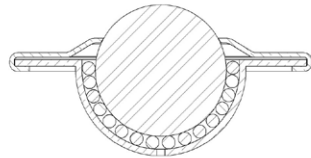


Ball caster with countersunk sheet steel casing



Designation	Material of bearing ball	Dimensioning							Sealing felt	Load bearing capacity (kg)
		Ø D1 (mm)	Ø D2 (mm)	Ø D3 (mm)	H1 (mm)	H2 (mm)	Ø D4 (mm)	Ø D5 (mm) Anzahl		
Tolerances	-	-	+/- 0.2	-	+/- 0.2	+/- 0.1	-	-	-	-
Ball caster / ball transfer units with countersunk sheet steel casing (Flange fixed units), galvanised										
015.200	Tool steel	15.875	22.2	41.3	18.5	10.2	30	3.5 / 2 x	yes / no	12
019.200		19.050	29	61	22	10	44.5	5.1 / 3 x	yes	25
019.201		19.050	29	49	23	10	35	5.1 / 2 x	yes	25
025.200		25.400	38.1	73	30	14.2	55.6	5.1 / 3 x	yes	55
032.200		31.750	45.5	73.8	36	16.2	58.7	5.1 / 3 x	yes	125
040.200		40.000	63	94.6	48.5	21.2	70.2	7.0 / 3 x	yes	225
015.210	Plastic	15.875	22.2	41.3	18.5	10.2	30	3.5 / 2 x	yes / no	10
019.210		19.050	29	61	22	10	44.5	5.1 / 3 x	yes	20
019.211		19.050	29	49	23	10	35	5.1 / 2 x	yes	25
025.210		25.400	38.1	73	30	14.2	55.6	5.1 / 3 x	yes	40
032.210		31.750	45.5	73.8	36	16.2	58.7	5.1 / 3 x	yes	90
040.210		40.000	63	94.6	48.5	21.2	70.2	7.0 / 3 x	yes	110
076.210		76.000	94.5	137.8		42.2	118	8.0 / 3 x	yes	140
015.220	Stainless steel	15.875	22.2	41.3	18.5	10.2	30	3.5 / 2 x	yes / no	12
019.220		19.050	29	61	22	10	44.5	5.1 / 3 x	yes	25
019.221		19.050	29	49	23	10	35	5.1 / 2 x	yes	25
025.220		25.400	38.1	73	30	14.2	55.6	5.1 / 3 x	yes	55
032.220		31.750	45.5	73.8	36	16.2	58.7	5.1 / 3 x	yes	125
040.220		40.000	63	94.6	48.5	21.2	70.2	7.0 / 3 x	yes	225
Ball caster / ball transfer units with countersunk sheet steel casing (Flange fixed units), entirely of stainless steel										
015.230	Stainless steel	15.875	22.2	41.3	18.5	10.2	30	3.5 / 2 x	yes / no	12
019.230		19.050	29	61	22	10	44.5	5.1 / 3 x	yes	25
019.231		19.050	29	49	23	10	35	5.1 / 2 x	yes	25
025.230		25.400	38.1	73	30	14.2	55.6	5.1 / 3 x	yes	55
032.230		31.750	45.5	73.8	36	16.2	58.7	5.1 / 3 x	yes	125
040.230		40.000	63	94.6	48.5	21.2	70.2	7.0 / 3 x	yes	225

Ball caster with countersunk sheet steel casing



Design and construction

This Schulz ball caster / ball transfer units consists of a casing and a top cover as stamped parts, a bearing ball and several support balls. In common parlance, these ball casters are also called "UFO" or "Saturn" ball casters, according to their construction type.

Dimensions

The spacing is calculated by dividing the shortest edge length of the object to be transported by 3.5.

Materials

Casing:	galvanised steel, Stainless steel
Deckel:	galvanised steel, Stainless steel
Support balls:	Tool steel (tempered), Stainless steel (tempered)
Bearing ball:	Tool steel (tempered), Stainless steel (tempered), Plastic

Operational conditions

Temperature range from -30°C to +100°C (up +30°C with plastic bearing ball)
Conveyance velocity of up to 1,0 m/s.
Dynamic load rating up to max. 225 kg.